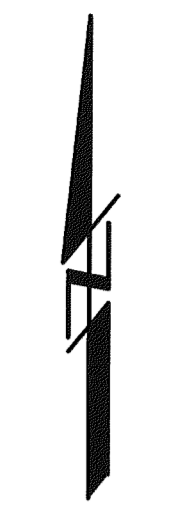


**PRELIMINARY / FINAL PLAT OF SUBDIVISION**  
OF:  
**COLLIE'S RUN SUBDIVISION**

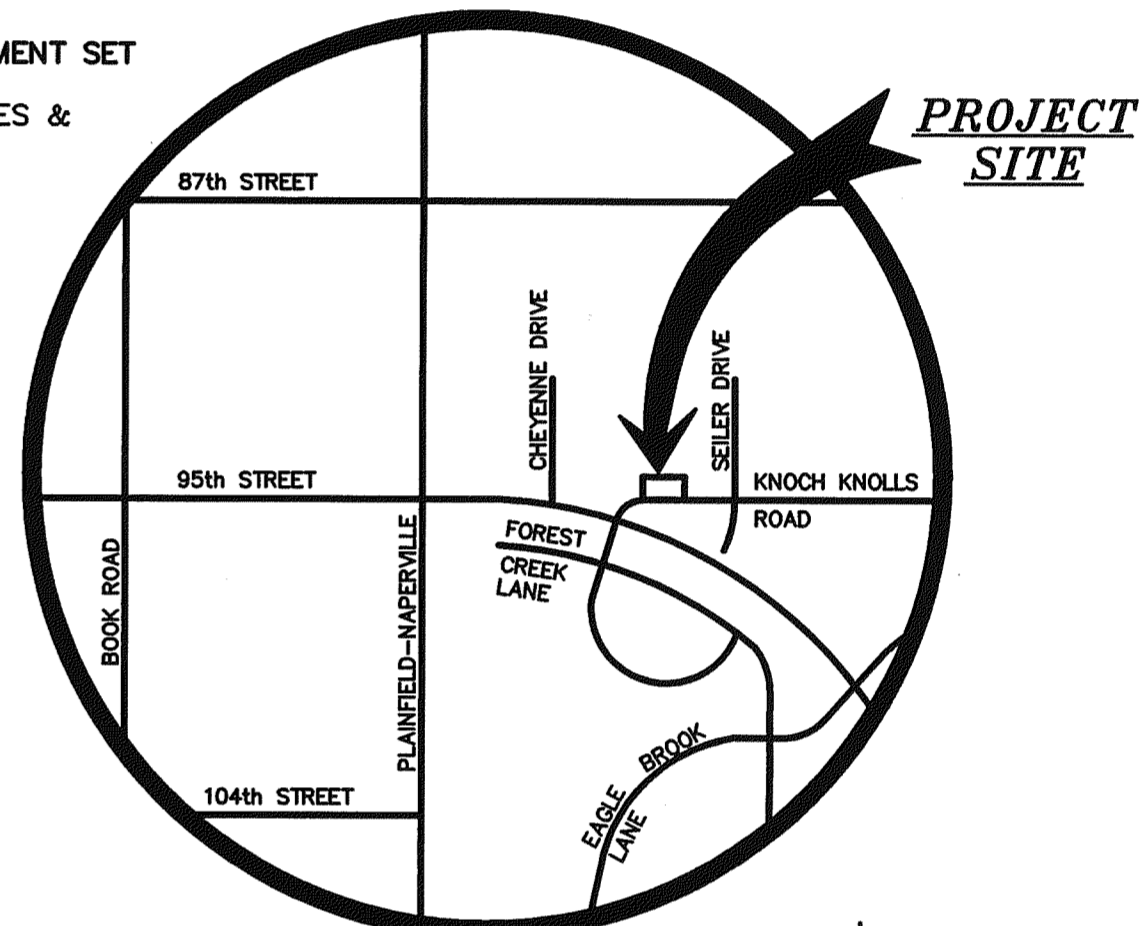
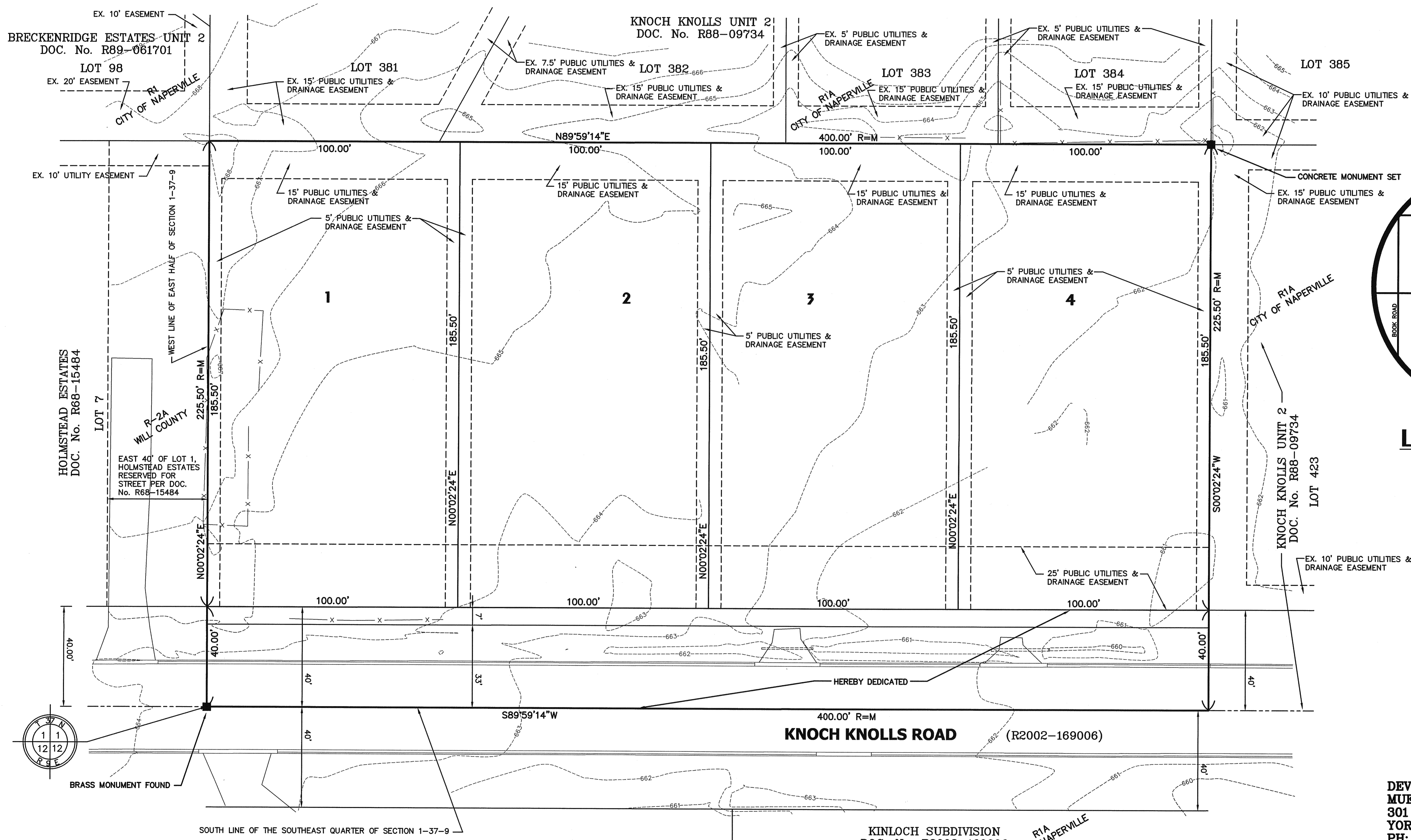
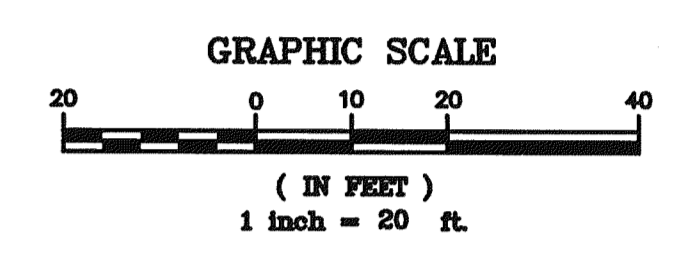
THAT PART OF THE SOUTHWEST QUARTER OF THE SOUTHEAST QUARTER OF SECTION 1, TOWNSHIP 37 NORTH, RANGE 9, EAST OF THE THIRD PRINCIPAL MERIDIAN, WILL COUNTY, ILLINOIS.

THIS PLAT HAS BEEN SUBMITTED FOR RECORDING BY AND RETURN TO:  
NAME: NAPERVILLE CITY CLERK  
ADDRESS: P.O. BOX 3020  
400 S. EAGLE STREET  
NAPERVILLE, ILLINOIS  
60566-7020



SCALE: 1" = 20'

BASIS OF BEARING = ASSUMED  
BASIS OF MERIDIAN = ASSUMED



**LOCATION MAP**  
N.T.S.

**ABBREVIATIONS**

- N - NORTH
- S - SOUTH
- E - EAST
- W - WEST
- L - LENGTH
- R - RADIUS
- R - RECORD
- M - MEASURED
- CONC - CONCRETE
- DOC - DOCUMENT
- EX - EXISTING
- No - NUMBER

- LEGEND**
- MONUMENT
  - - - EASEMENT LINE
  - PROPERTY LINE
  - SUBDIVISION BOUNDARY LINE

**AREA**  
SINGLE FAMILY LOTS: 74,200 SQ.FT. = 1.7034 ACRES  
GROSS AREA: 90,200 SQ.FT. = 2.0707 ACRES  
R.O.W. DEDICATION: 16,000 SQ.FT. = 0.3673 ACRES

**DEVELOPER:**  
**MUELLNER CONSTRUCTION**  
301 S. BRIDGE STREET  
YORKVILLE, ILLINOIS 60560  
PH: (630) 553-5393  
FAX: (630) 553-5401

CITY OF NAPERVILLE PROJECT NO. 05-10000169

**INTECH CONSULTANTS, INC.**  
**ENGINEERS / SURVEYORS**  
5413 WALNUT AVE. DOWNERS GROVE, IL (630) 984-8858

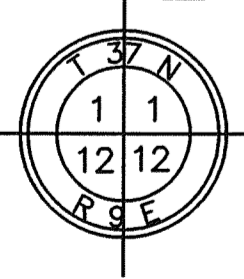
SHEET No. 1 of 2 JOB No.: 2005-040

LOT	SQUARE FEET	ACRES
1	18,550	0.4258
2	18,550	0.4258
3	18,550	0.4258
4	18,550	0.4258

- BENCHMARKS:**
- TAGGED BONNET BOLT ON FIRE HYDRANT AT LOTS 85/86  
ELEV = 662.80  
CROSS CUT ON TOP OF CURB OPPOSITE HYDRANT ABOVE  
ELEV = 661.48
  - TAGGED BONNET BOLT ON FIRE HYDRANT AT NW CORNER  
OF LOT 88  
ELEV = 660.88  
CROSS CUT ON TOP OF CURB OPPOSITE HYDRANT ABOVE  
ELEV = 659.37

- NOTES:**
- IRON PIPES ARE AT ALL LOT CORNERS.
  - ALL EASEMENTS ARE HEREBY GRANTED UNLESS OTHERWISE NOTED.
  - ALL EASEMENTS DEPICTED ON THE PLAT ARE FOR PUBLIC UTILITIES AND DRAINAGE PURPOSES UNLESS OTHERWISE NOTED. REFER TO THE PUBLIC UTILITIES AND DRAINAGE EASEMENT PROVISIONS STATEMENT ON SHEET 2 OF 2 FOR SPECIFIC TERMS AND CONDITIONS.
  - ALL MEASUREMENTS AND DISTANCES ARE SHOWN IN FEET AND DECIMAL PARTS THEREOF.

REVISED: 8-13-07 PER CITY REVIEW DATED 7-27-07  
REVISED: 6-21-07 PER CLIENT REQUEST  
REVISED: 4-13-06 PER CITY REVIEW DATED 3-22-06  
PREPARED: 9-21-05



BRASS MONUMENT FOUND

C:\Land Projects\2005-040\dwg\2005-040-PLAT.dwg, PLAT, 8/13/2007 8:24:05 AM, SJP

COLLIE'S RUN SUBDIVISION